

# ROKU STREAMING STICK: DEVICE SETUP GUIDE



## Step #1: Create a Roku Account

Go to <https://my.roku.com/signup> and fill in all of the required fields.

**Roku**

### Create your Roku account

You need a Roku account to activate your device and access entertainment across thousands of streaming channels.

\* First name      \* Last name

\* Email

\* Password

I am 18 years or older.

I agree to the [Terms and Conditions](#). I have read the [Privacy Policy](#).

I have read and agree to the [Updates and upgrades](#)

I agree to receiving news and special deals from Roku and its partners. I understand that I may withdraw my consent at any time.

I'm not a robot

**Continue**

\* These fields are required.

[I already have a Roku account. Sign in](#)

Next, confirm your PIN preferences.

Enabling and selecting a PIN passcode will give you an extra level of security for any purchases you may make within the Roku store. If you choose to purchase an app, Roku will automatically ask you to input your PIN passcode to confirm the purchase. This feature is optional and can be adjusted at any time. 👍

**Roku**

### Choose your PIN preferences

Setting a Personal Identification Number (PIN) and preference allows you to control when channels can be added and when purchases can be made using your Roku device.

Always require a PIN to make purchases and to add items from the Channel Store.

Always require a PIN to make purchases.

A PIN is not required to make any purchase or add any item from the Channel Store.

[Learn more](#)

**Continue**

Language Selector

[Terms and Conditions](#) | [Privacy Policy](#) | [Developer Site](#) | [About ads & cookies](#) | Roku, Inc. 150 Winchester Circle, Los Gatos, CA 95032 | [www.roku.com](#)

© 2008-2021 Roku, Inc.

## Optional: Set Up Roku Pay

Providing a payment method is not required to set-up a Roku account, however if you choose to purchase applications from Roku in the future, Roku Pay is available for a smooth and quick purchasing experience.

Please note: If you choose to add a payment method, we will not have access to this information as per the Roku privacy policy. Read the policy [here](#).

**Roku**



**If you decide against adding a payment method, you can go back to the Roku home page by clicking the logo in the top left corner.**

Create your Roku account

You need a Roku account to activate your device and access entertainment across thousands of streaming channels.

\* First name:  \* Last name:

\* Email:


\* Password:

I am 18 years or older.

I agree to the Terms and Conditions. I have read the Privacy Policy.

I have read and agree to the Updates and upgrades.

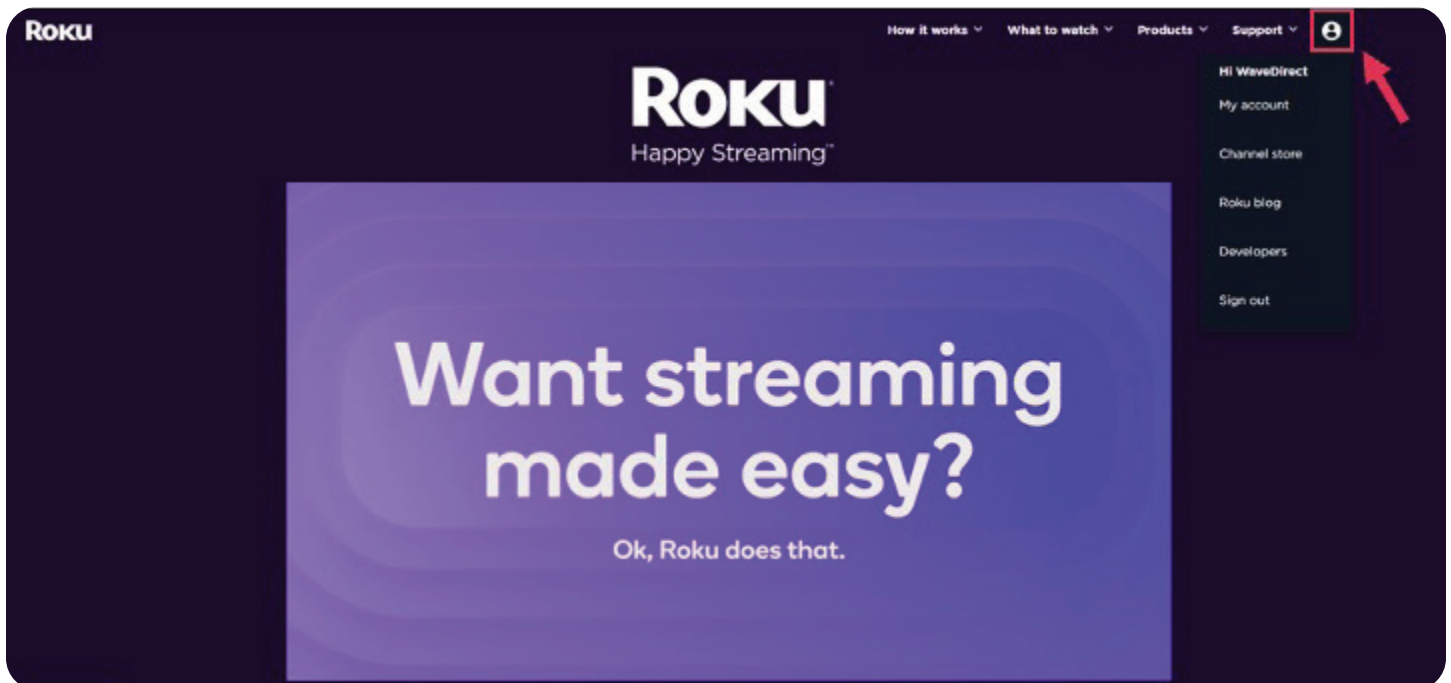
I agree to receiving news and special deals from Roku and its partners. I understand that I may withdraw my consent at any time.

I'm not a robot 

\* These fields are required

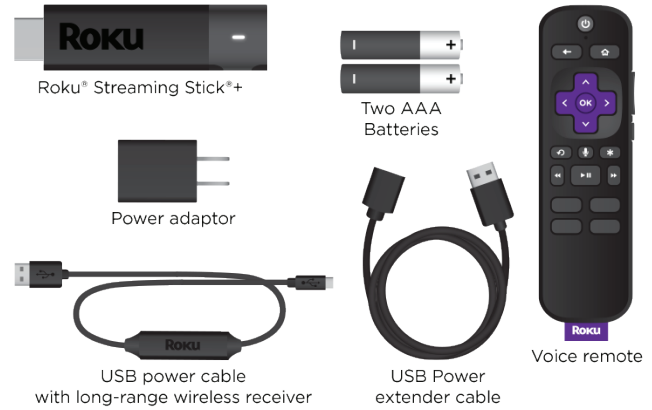
I already have a Roku account: [Sign in](#)

From the Roku homepage you can view your account and settings

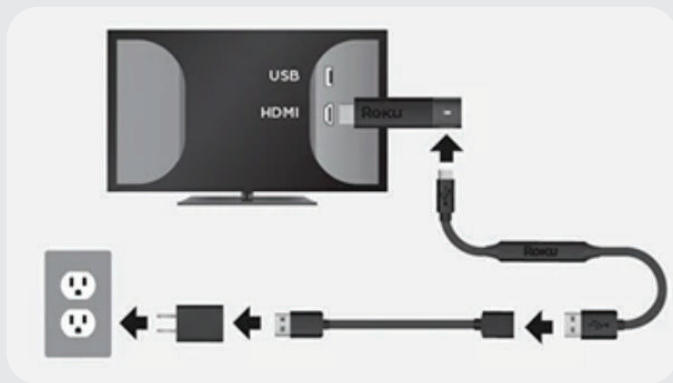


## Step #2: Getting started and connecting in your Roku Streaming Stick

### What's included in your Roku Streaming Stick package?



Product images not to scale.

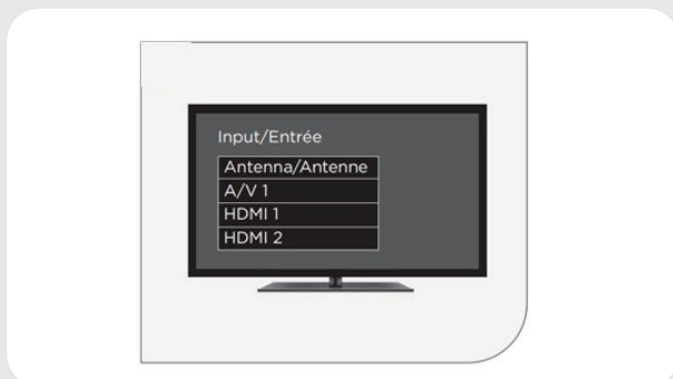


First, plug your Roku Streaming Stick into the HDMI port of your TV. Next, use the USB power cable, power extender cable, and power adaptor to connect your device to an outlet.



Alternatively, you can use the included USB power cable to power your device from the USB port on your TV.

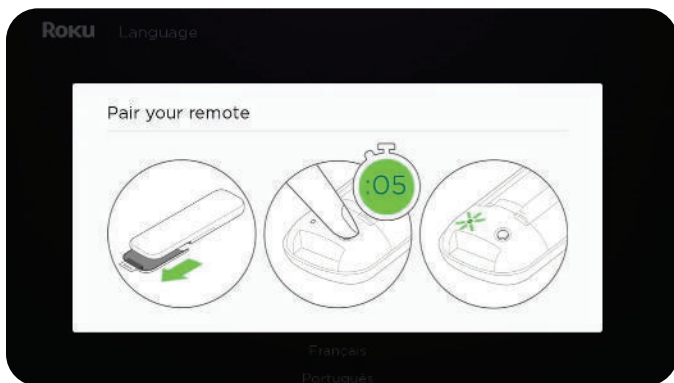
Note: The USB port on some TV's may be unable to power your device. If you see the on-screen warning message that appears in these cases, use a wall outlet.



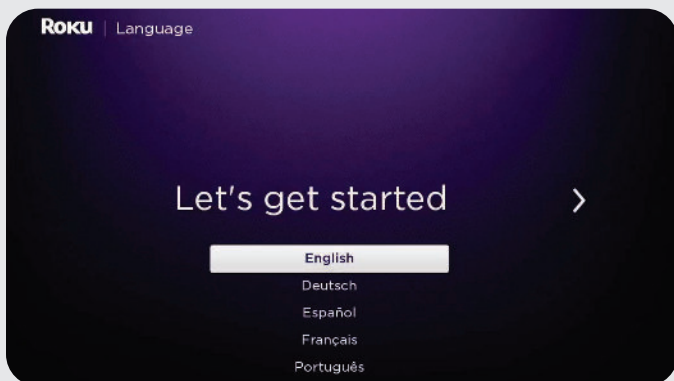
Next, power on your TV and select the correct input.



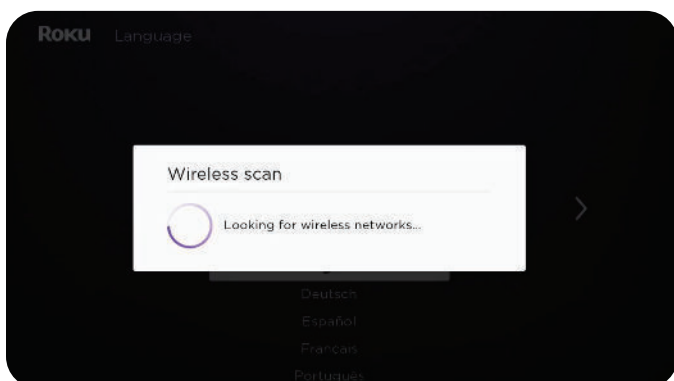
After you've selected the correct input, insert the batteries into the Roku Streaming Stick remote and begin the pairing process.



Follow the on screen instructions to pair your remote to your streaming stick.



Once paired, you will see this setup screen to get started with your preferences.

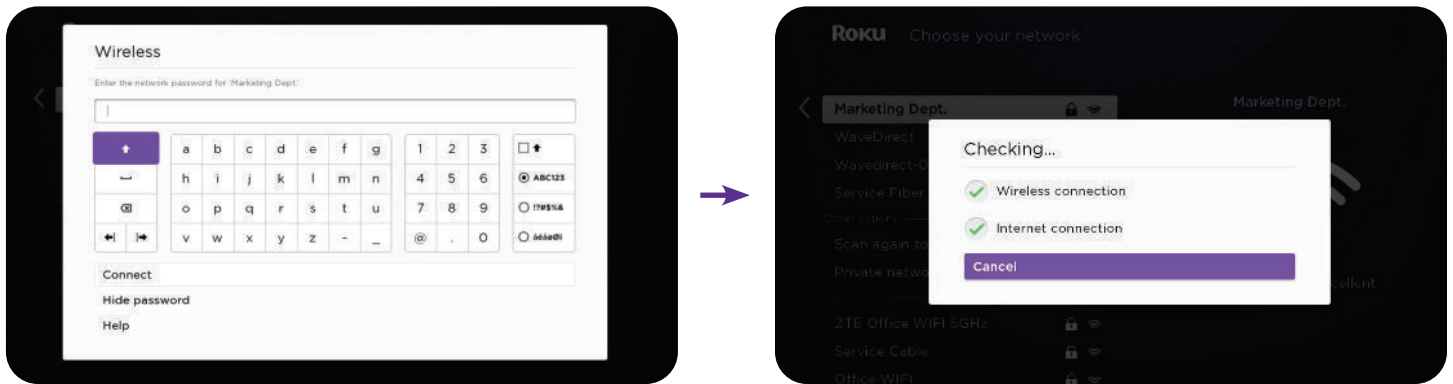


After clicking your language choice, your device will need to connect to your home WiFi network.

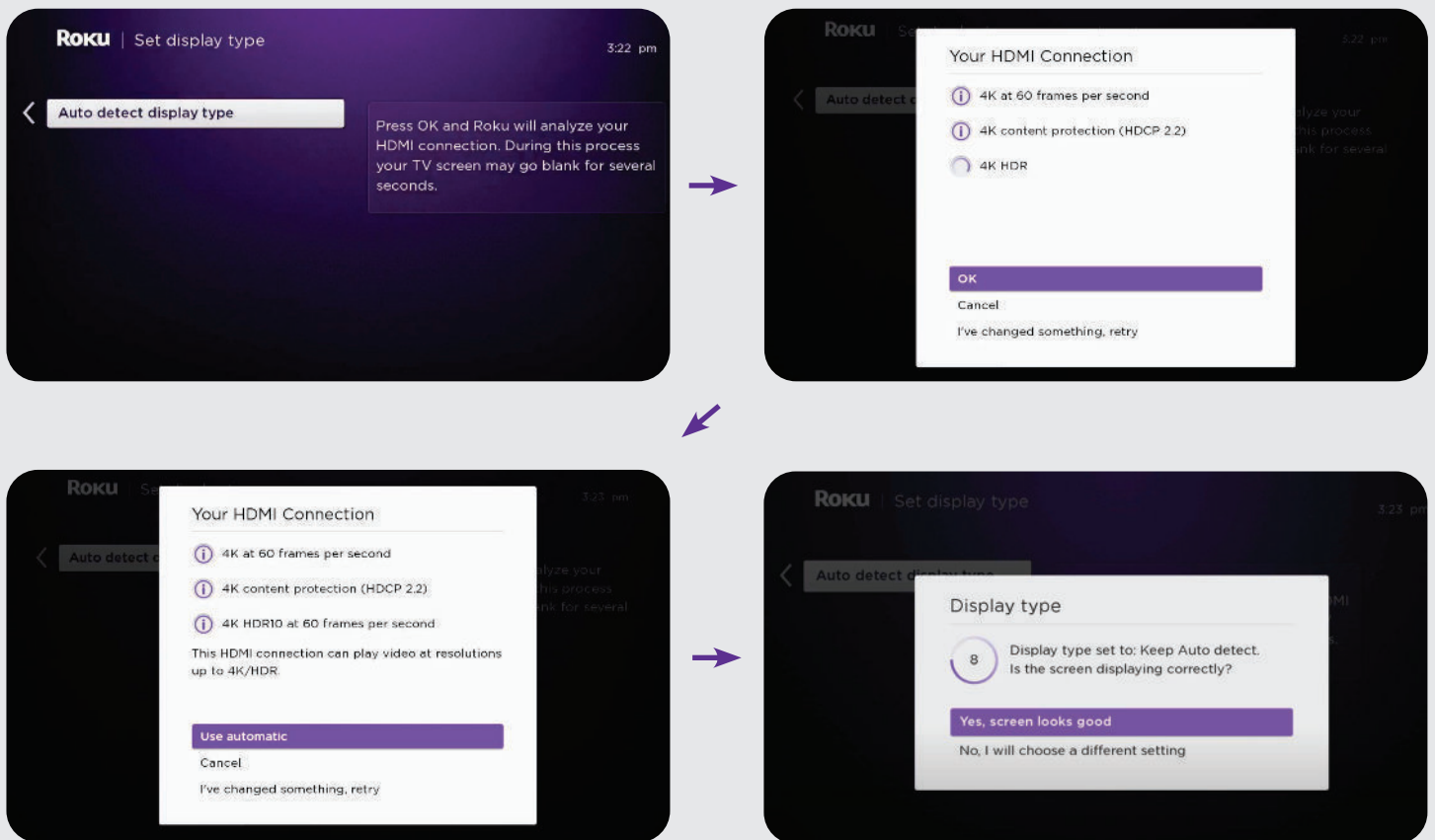
Choose your home network and input your WiFi password.

Once your device establishes a network connection, you will be prompted to set up your display type.

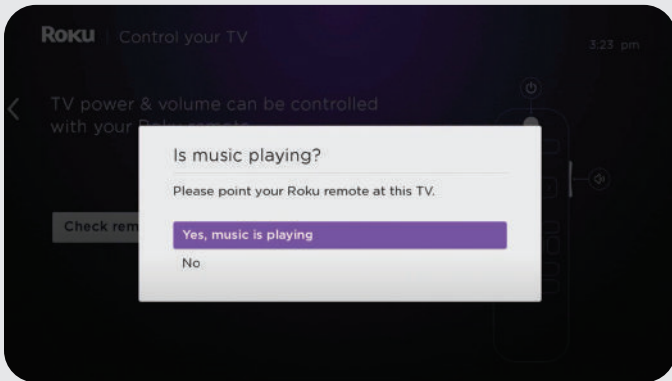
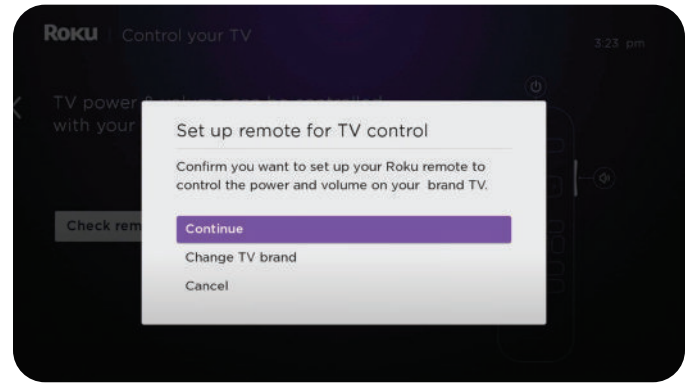
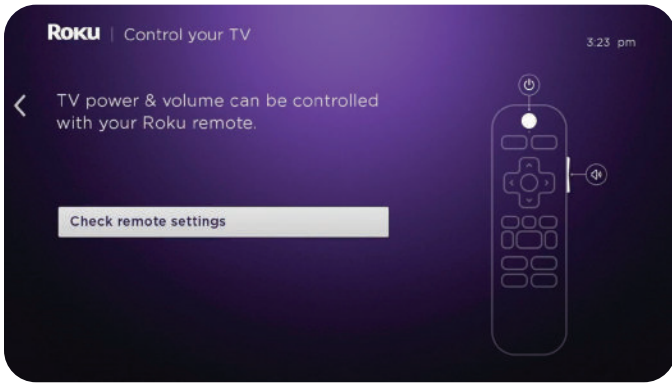
\*You may notice that your Roku requires an update, click okay and allow it to continue.



Click "Auto detect display type", once completed click "Use automatic" and click "Yes, screen looks good".



Set up your Roku remote. Click check the remote settings. You will be asked if you want to set up your Roku remote to control the power and volume on your tv, click continue.

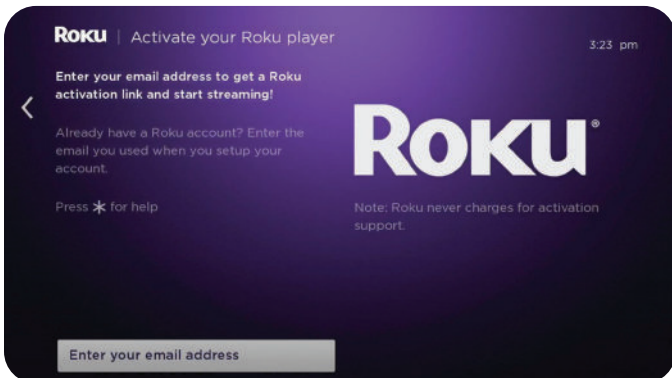


You should hear music, click yes, music is playing.

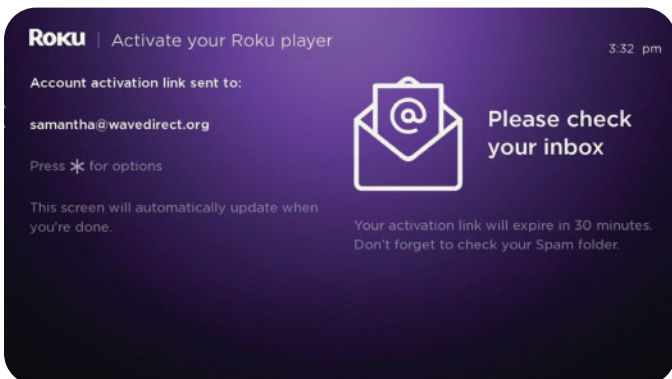
You should hear the music stop, click okay.

### Step #3: Link your device

During the set-up on your TV you will be asked to log into your Roku account.



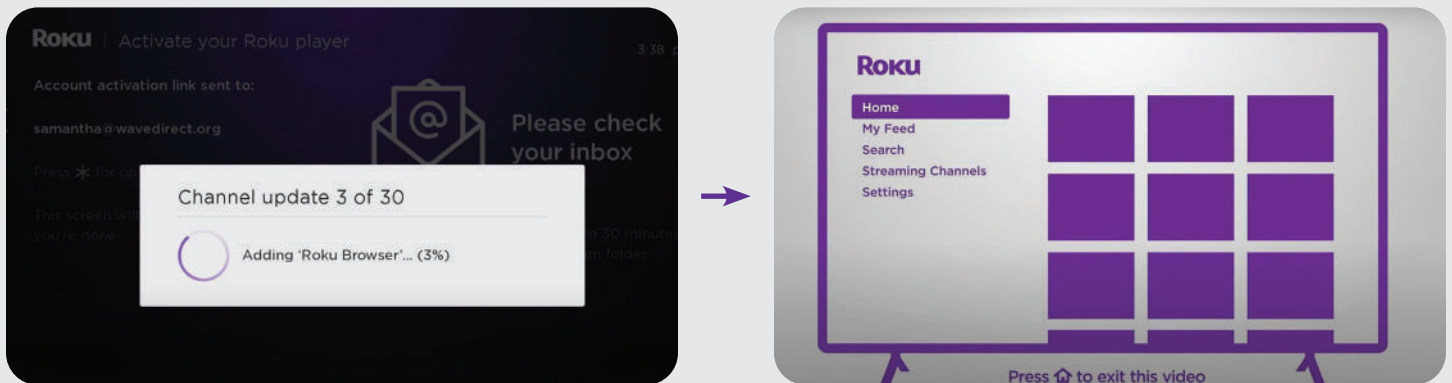
You need to pair your Roku account with your device. Click enter your email address.



Next, check your email inbox for your email activation link.

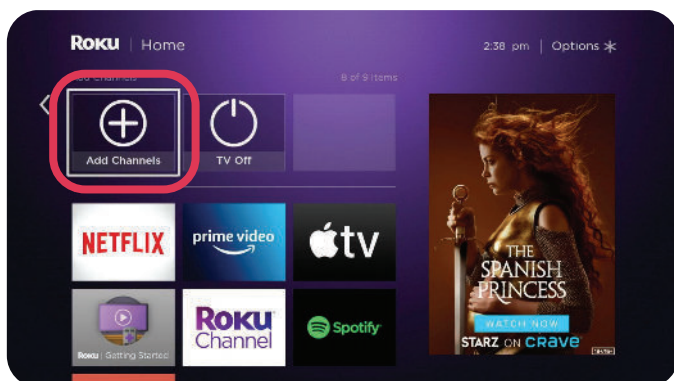
Once you click the activation link in your email, you will be asked to name your device and identify its location. Agree to the terms and select continue. You will now be able to add other favourite applications at this time. You can also choose to do this later. (See setup video for full visual demonstration)

Once updated, you should now see on screen prompts on your tv followed by the Roku demonstration.



When your device is successfully linked, you can move onto the Step #4.

## Step #4: Install the WightmanTV app



To access the updated version of the app, you can follow **one of two steps**:

1. From the Roku homepage, hold the microphone button and say **Wightman** into the remote.



When the app appears, click it, select "Add channel", agree to the terms and **WightmanTV** will download to your homepage.

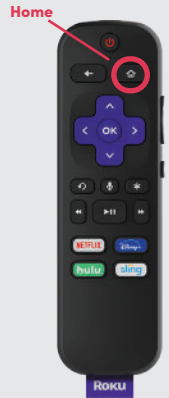
**OR**

2. From the Roku homepage, click "+ Add Channels" and search for **WightmanTV** by typing it into the search engine. Select the app, agree to the terms and the channel will download to your homepage.



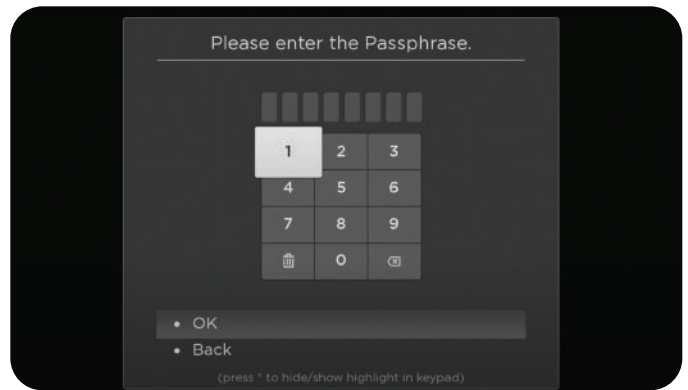
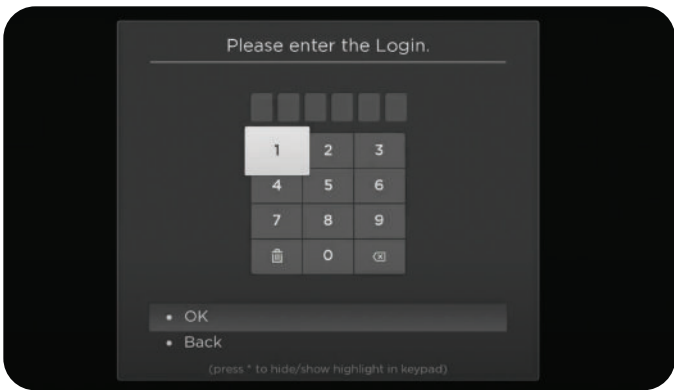
Once the app has downloaded, you can select “Go to channel” or click the home button on your remote to view the app on your homepage.

Select the app and proceed to the next final step to connect to WightmanTV.



### Step #5: Log-in and Start Streaming!

Click WightmanTV app and then log in using the information provided in the email we sent you.



**You're ready to start streaming WightmanTV!**



For support, please contact Technical Support at 1-877-327-4440